



Brochure For Cold Storage



Technology Partners



Ventech LLP Partners



Railtech Infraventures Pvt. Ltd

Sudhir Singh
B.Tech. (Civil Engg) HBTI Kanpur

Navneet Maheshwari
B.Tech. IIT Kanpur - Civil Engg.
M.Tech. IIT Delhi - Structural Engg.

Key Team Members :

Prashant Agrawal
Email : prashant@railtech.co.in

Sudhir Singh
Email : sudhir@ventechprecast.com

Amit Bansal
Email : amit@railtech.co.in

Navneet Maheshwari
Email : navneet@ventechprecast.com

Office Address:

Corporate Office Address
6th Floor, Railtech
Square, Transport Nagar
Lucknow-226012 (u.p.)

Office address-1
117/Q/45 L.G.F., envirad
complex sharda nagar,
kanpur-208025 (u.p.)

Office address-2
Keshavam - 355, vikas
nagar sales tax office road,
kanpur-208024 (u.p.)

Factory Address :

Factory address-1:
Opposite Chaura Railway Station,
Kalpi Road, Vilage Kariyapur,
Kanpur Dehat

Factory address-2:
Keshavam, Bagdaudhi kachhar,
Near GAIL super 100, GT Rd,
Near Vaishnodevi darbar, Mandhana, Kanpur

Contact Details

Navneet Maheshwari
☎ +91-7755880777, 9559000333

✉ contact@ventechprecast.com
🌐 www.ventechprecast.com

Improves
Looks, Strength & Re-Installation
SAVE MONEY & TIME

Durability

Economy

Speedy Construction

Aesthetics

Quality Assurance



Welcome to...

About Ventech

Ventech is a group of engineers, that offers consultancy & turnkey projects in the field of Engineering, Architecture, Environmental, and Infra-structure Development work from the past 20 years.

For the fast growth of the country, Ventech has decided to expand the services in the field of manufacturing of rapid construction technique like pre-stress and pre-cast of residential, commercials and infrastructure elements.

The back bone of our organization are experience professionals coming from reputed institutions such as **I.I.T. Kanpur, H.B.T.I. Kanpur**. We have the most experienced professionals from various applied fields. The limbs of our organization are the devoted associates and associate consultant members whose determination and capabilities of good performance are an indispensable requirement for any organization. The in house capabilities are supplemented and strengthened by our panel of associate who are experts with high academic and professional achievements & capabilities.

The Basic Concept

The main theme of the company is to provide services to industries, institutions and government agencies with out standing, efficient and cost effective services. This stems from a philosophy build around people, quality and excellence.

Commitment to excellence in quality has been the company's credo since the day of its inception and from the emphasis in all our operations.



OUR SERVICES

Ventech is an innovative building system to meet the revolution for today's construction industry. We provide the frame structure of a building in a salient way as compared to conventional construction method. Based on the buildability, economy and standardization of precast components, our product consist of following structural elements :

- Hollow - core slab and wall panels**
- Foundations and columns**
- Beams and lintels**
- Drainage systems**
- Customizes as par requirement of client**



SOME CONSTRUCTION SITE IMAGES



ABOUT COLD STORAGE

India is agriculture dominant country. Farmers are backbone of economy of India. They fulfill the need of country. To provide safety of produces and sake of farmers including empowerment, *Ventech prestressed and precast LLP* designed and constructed **India's first PRECAST COLD STORAGE**. Storage is the art of keeping the quality of agricultural materials and preventing them from deterioration for specific period of time, beyond their normal shelf life. Cold storage Control ripening retards aging, softening, texture and color change, retards moisture loss, wilting, microbial activity, spoilage, sprouting and undesirable growth. Availability of proper cold storages are important for preserving perishable commodities like milk, meat, eggs, vegetables, fruits, ornamental flowers and other.

Advantages of Cold storage

- Prolonging Shelf-life of Fruits and Vegetables
- Temperature Control
- Cost-effective
- Freeing up space
- Products transportation makes easy

Our services

- *Ventech prestressed and precast LLP* designed Cost-effective and durable structure of cold storage
- It reduces 30% electricity bill and other maintenance costs.
- All mechanical equipment design and installation including construction upto commissioning and hand over
- Construction life 25 yrs
- Construction and mechanical maintenance
- Warranty of 5 years
- Providing sensor based appli cation to monitor humidity, temperature, Co2 and etc.

INDIA'S FIRST PRECAST COLD STORAGE

India's first PRECAST COLD STORAGE is situated in Basara, Barabanki, Uttar Pradesh.

Specification

- Capacity in weight: 6000 metric ton
- Capacity in volume: 21,000 Cubic metre
- Produce type: Potato
- Cold storage type : Cold storage without pre-cooling system
- Intake: 1,20,000 packet per year
- Wall and Thermal insulation :Air insulation sandwiched with Hollow core slab
- Hollow core slab : 4 inch
- Electricity bill : 32,00,000 ₹
- Yearly savings : 10,00,000 ₹

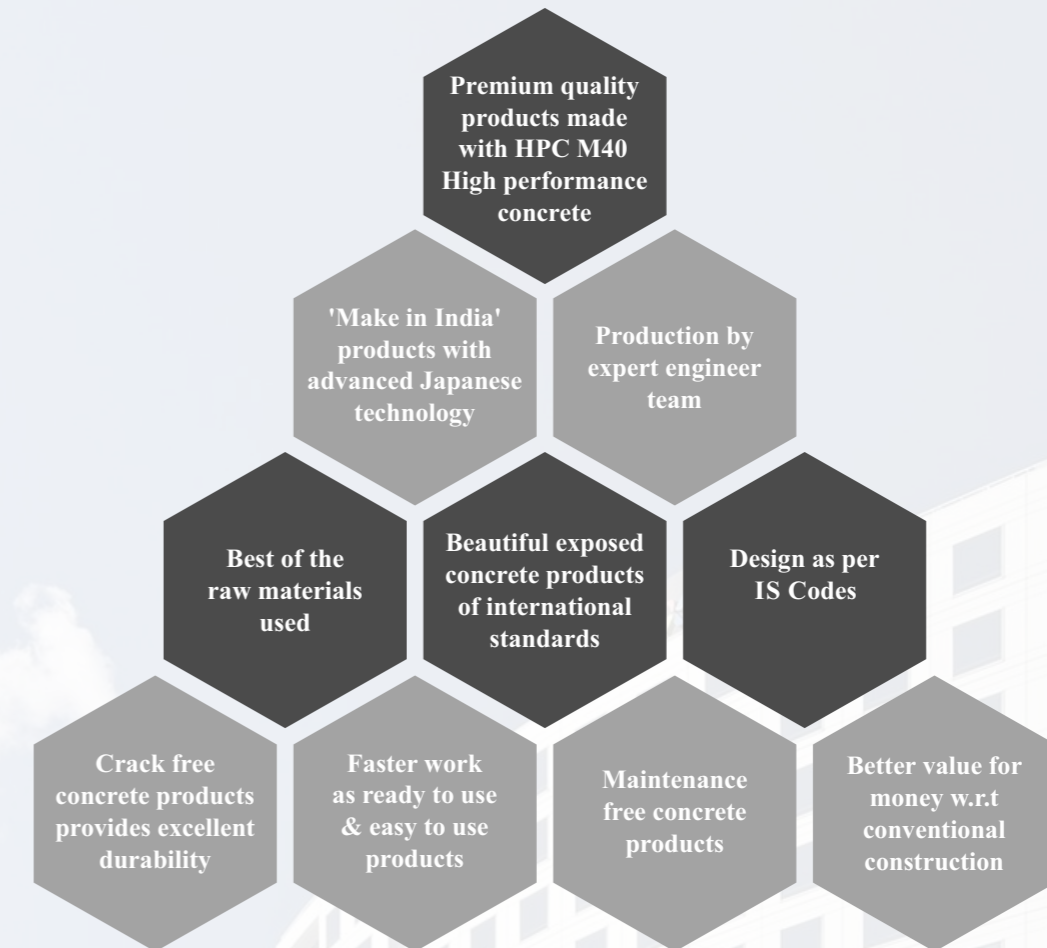
INNOVATION IN DESIGN OF COLD STORAGE

Sandwiched wall panel

Advantages

- Highly thermally insulated as compare to brickwork and hollow core slab
- Erection cost effective as compare to brickwork and hollow core slab
- Easy to install and casting
- The pattern design makes it beautiful.
- Electricity and maintenance cost effective
- Time saving process
- Reusable
- Earthquake resistant and stronger in shear compare to brickwork

PRESTRESS & PRECAST CONCRETE ADVANTAGES



HOLLOW CORE SLAB

Hollow-core slabs are precast prestressed concrete elements extensively used for floor, roof slabs and wall panels. The success of this precast product is owing to the combination of high efficiency of design, automated production technology resulting in remarkable low price, versatility in the selection of unit depth and capacity, in addition to its ready-to-paint smooth surface as well as its high quality and durability.

Advantages of Hollow-core Slabs

- Remarkably lower price as compared to other systems.
- Automated production under strict Quality and Safety Control.
- Longer span and greater load carrying capacity than conventional slabs of the same thickness.
- No need for propping and scaffolding.
- Maximum design flexibility.
- High strength, lightweight, durable structure.
- Superior fire resistance.
- Superior earth quake resistance.
- Preexisting longitudinal holes that can be used as conduits.
- Speed and ease of construction.
- High thermal insulation properties.

PRODUCT DETAILS

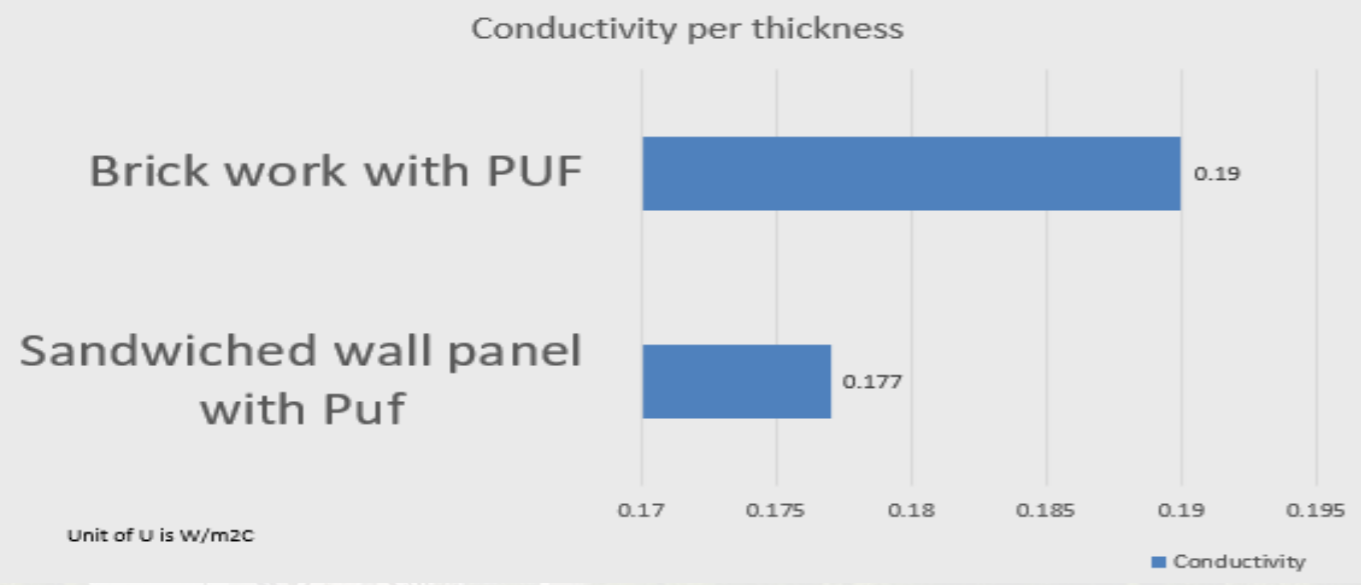


HOLLOW — CORE SLABS

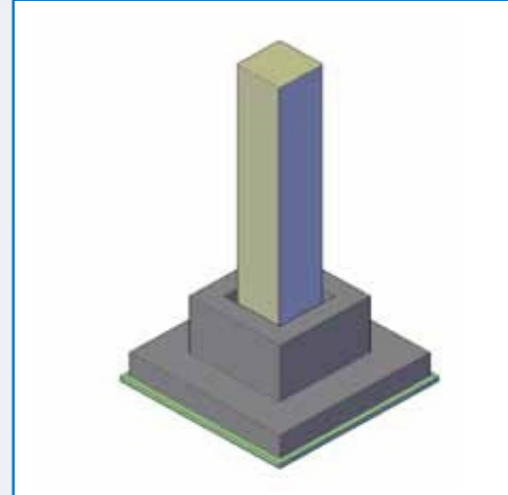
COLUMN

BEAM

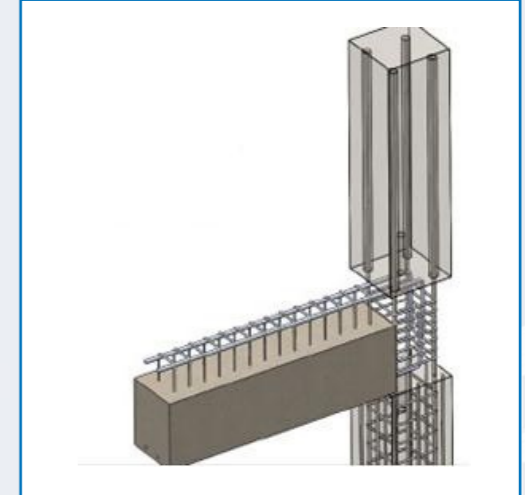
THERMAL ANALYSIS PER SQUARE METRE OF SANDWICHED PANEL WITH PUF AND BRICKWORK WITH PUF



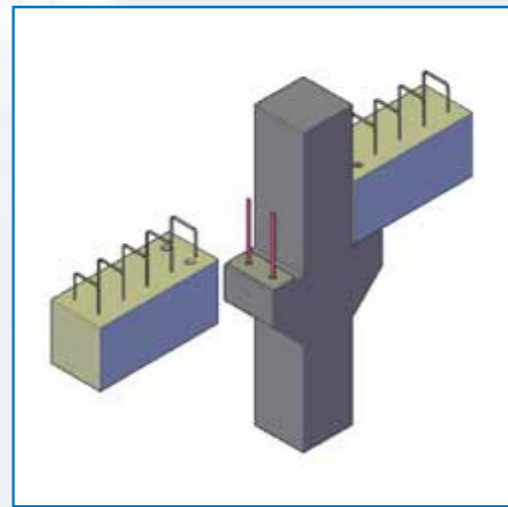
PRECAST CONNECTION DETAILS



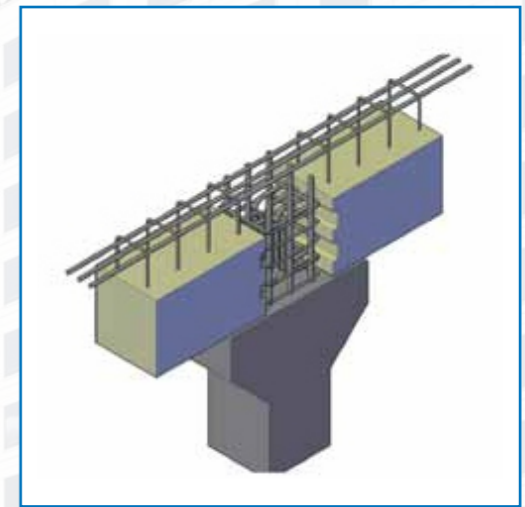
Pocket footing to Column



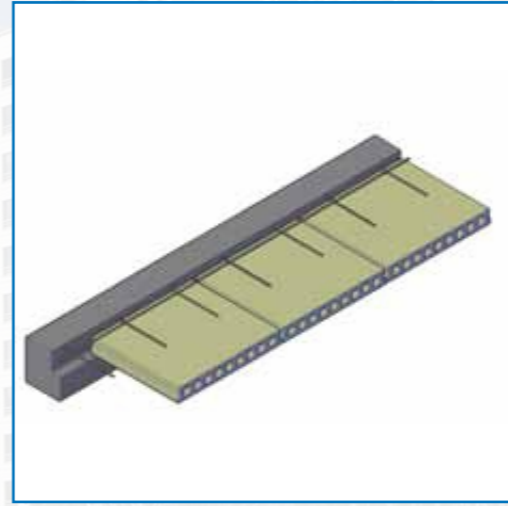
Column Beam Junction Detail



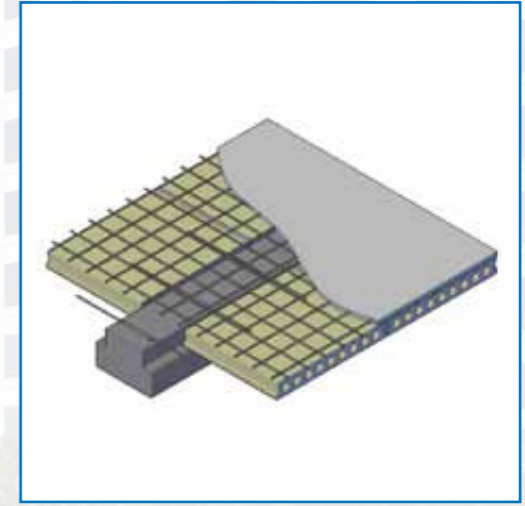
Column to Beam joint



Column to Beam joint



Beam to Hollow Core Slab



Beam to Hollow Core Slab